

MTS-206 SERIES

MAVERICK FIELD TEST SET

- A rugged, portable tester for Maverick and Hellfire missiles
- Intermediate-Level testing of AGM-65 missiles, missile sections, LAU-117 & LAU-88 launchers, launcher-missile clusters, and AGM-114 missiles
- State-of-the-art PXI architecture
- Full parametric test with optional diagnostics
- NSN 4935-01-500-9490 (MTS-206) and 4935-01-628-1849 (MTS-206-2)
- Safety certified by USAF NNMSB



DESCRIPTION

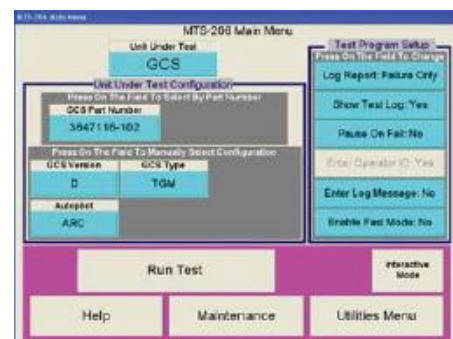
The MTS-206 is a state-of-the-art portable test set for the AGM-65 Maverick missile system and for AGM-114 missiles. It combines the test capabilities of an I-Level test set in a compact, rugged enclosure suitable for field use. The MTS-206 performs parametric functional tests on Hellfire Missiles and on Maverick missile system components including: AGM-65 missile (all versions in tactical and training configurations), AGM-65 missile sections (GCS & CAS, all versions in tactical and training configurations), LAU-117 and LAU-88 Maverick launchers (all versions), and launcher-missile clusters.

FEATURES

The design of the MTS-206 is based on PXI technology. PXI, PCI eXtensions for Instrumentation, is now being specified by most military and commercial customers as the platform of choice for field, intermediate, and depot test equipment due to its rugged construction, high performance, and cost-effectiveness. The MTS-206 shares the same architecture as the MTS-209 Common Armament Test Set, MTS-235 JSF Armament Test Set, AN/TSM-205B Hellfire System Test Set, and the PATS-70 Portable Avionics Test Set.

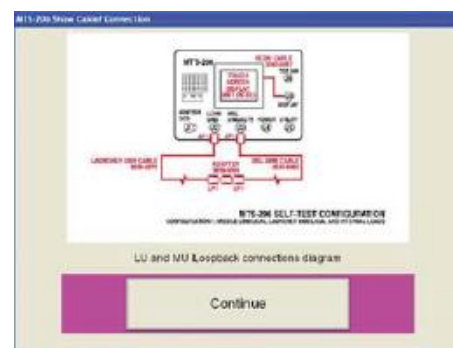
The MTS-206 is controlled by an integrated LCD display and touch screen - Remote Control & Display Unit (RCDU). The RCDU allows operation of the MTS-206 from distances of up to 25 feet. The modular PXI chassis is secured via five shock absorbers to enable the MTS-206 to meet stringent shock and vibration requirements. Built-in heaters for the PXI chassis and the RCDU allow the MTS-206 to operate in extremely low temperatures.

The menu-driven design of the MTS-206 simplifies operation and minimizes required training. The Main Menu provides for quick selection of the UUT by type and automatically configures the MTS-206 for testing.



Intuitive Menu Driven Control

Cable detection is automatic and, in the event of a misconnection, clear prompts instruct the user as to which cables are required and how to identify and connect them. For AGM-65 seeker slewing and boresighting, the MTS-206 utilizes an embedded video window displayed on the RCDU and a virtual joystick that significantly reduces operating time and the learning curve.



On-line Interconnect Diagrams

MTS-206 SERIES

COMPATIBILITY AND FUTURE GROWTH

The MTS-206 is fully compatible with existing target simulators such as the AN/DSM-787 (IR), AN/DSM-129 (TV/CCD), and SMU-127 (laser) as well as with new target simulators such as the MTS-916 (TV/IR/Laser). When operating with the MTS-916, the MTS-206 test process becomes even more automated due to a communication link between the test set and the digital target simulator.

The MTS-206 was designed to test all current and future versions of the Maverick missile system. Future growth includes the Dual Mode LAU-117 launchers (DML) as well as the latest versions of the AGM-65 missile including AGM-65E2 and AGM-65L and the latest versions of AGM-114 Hellfire missiles including Romeo. An innovative upgrade mechanism allows software upgrades in the field using a flash disk shipped from the factory to the country.

DATA STORAGE

The MTS-206 automatically saves data from all test runs. The saved test logs can be viewed on the MTS-206 display or transferred to any computer using the utility cable, which includes a USB interface. The test logs are used for trend analysis and for tracking of all tested assets, providing maintenance and readiness information to organizations that employ Maverick or Hellfire.

MAINTENANCE AND SUPPORT

The modular design and construction of the MTS-206 provides for simplified maintenance and reduced logistics. Available spare parts kits support in-country maintenance using the integrated self-test adapter that provides troubleshooting to the CCA level. The high MTBF and low MTTR ensure minimal downtime and continuous trouble-free use in the harshest operational environments. Built-in calibration references extend the calibration cycle to 2 years, and only require simple verification using basic PMEL equipment. This innovative calibration process eliminates the need to send the MTS-206 to the depot for calibration.



On-line Cable Identification



Interactive Seeker Testing

MTS-206 SERIES

SPECIFICATIONS

UUT SUPPORT: AGM-65	
Missile Versions	A/B, D, E/E2, F/F2, G/G2, H, J, JX, K, L
Seeker Types	TV, IR, CCD, Laser
Missile Types	Tactical (AGM), Training (TGM & CATM)
GCS Versions	A/B, D, E/E2, F/F2, G/G2, H, J, JX, K, L
CAS Versions	A/B, D, E/E2, F/F2, G/G2, H, J, JX, K, L
UUT SUPPORT: AGM-114	
Missile Versions	B, K, M, N, Q, R
UUT SUPPORT: LAUNCHER	
Launcher Types	LAU-117, LAU-88
LAU-117 Versions	V(1), V(2), V(3), V(4), DML
LAU-88 Versions	LAU-88A, LAU-88A/A
ELECTRICAL AND MECHANICAL	
CPU	Pentium 4, 1.7 GHz
Memory	512 MB RAM
Hard Disk	2 GB Solid State Disk
Interfaces	RS-422, RS-232, USB, Ethernet, VGA
Display	Sunlight-readable LCD sVGA display 600 x 800 resolution
Control	Touch-screen (part of display)
Input Power	115 V / 400 Hz / 3 F with automatic out-of-sequence phase correction
TARGET SIMULATOR COMPATIBILITY	
Simulator Model No.	Type
AN/DSM-787	IR
AN/DSM-129	TV/CCD
SMU-127	Laser
MTS-916	IR/TV/CCD/Laser

ENVIRONMENTAL	
Operating Temperature	-40 °F (-40 °C) to +140 °F (60 °C)
Storage Temperature	-63 °F (-53 °C) to +158 °F (71 °C)
Relative Humidity	95%, non-condensing
Altitude	15,000 ft (operating) 40,000 ft (non-operating)
Loose Cargo Vibration	MIL-STD-810E, Method 514.4
Vibration (Sine)	5 g Max (at 55 Hz)
Shock (Half-Sine)	7 g for 10 mS (operating) 20 g for 10 mS (non-operating)
Salt Fog	IAW MIL-STD-810C, Method 509.2, Procedure I
Dust	IAW MIL-STD-810C, Method 510.2, Procedure I
Rain	IAW MIL-STD-810C, Method 506.2, Procedure II
AMI/RMI	IAW MIL-STD-461C, Part 2, Class A1f
Size	25" x 19" x 20"
Weight	MTS-206: 75 lb MTS-206 with cables: 158 lb
National Stock Number	NSN 4935-01-500-9490

Note: Specifications are subject to change without notice

ORDERING INFORMATION

MTS-206	Maverick Field Test Set
MTS-206-1	Maverick Field Test Set with LAU-117 DML support
MTS-206-2	Maverick/Hellfire Field Test Set
OPTION	
MTS-206-SPK	Spare Parts Kit for the MTS-206

MTS-206 SERIES

THIS PAGE INTENTIONALLY LEFT BLANK